

3 PIECES BALL VALVE Carbon Steel, Flanged

Carbon Steel PN16 PN40
V-M3P-03-04F V-M3P-03-07F

Design

Size : DN15 - DN125 EN558-1 / F1
DN150 - DN200 EN558-1 / F5
Connection : EN 1092-1
Actuator Connection: ISO 5211

Technical Features

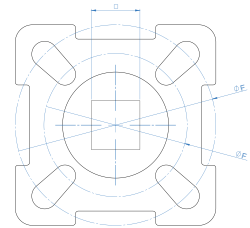
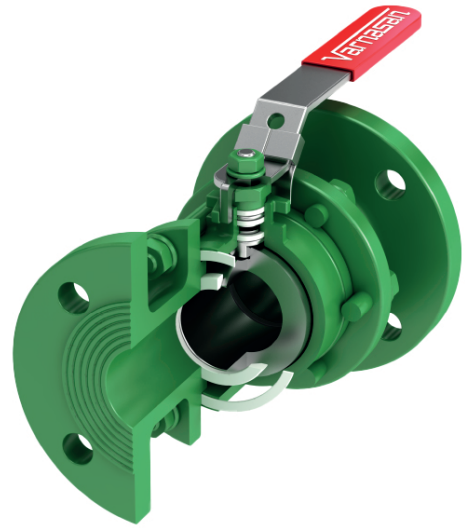
Working Pressure : PN16, PN40
Working Temperature : -30°C / +180°C
Usage : Option with actuator connection and handle

Certificate

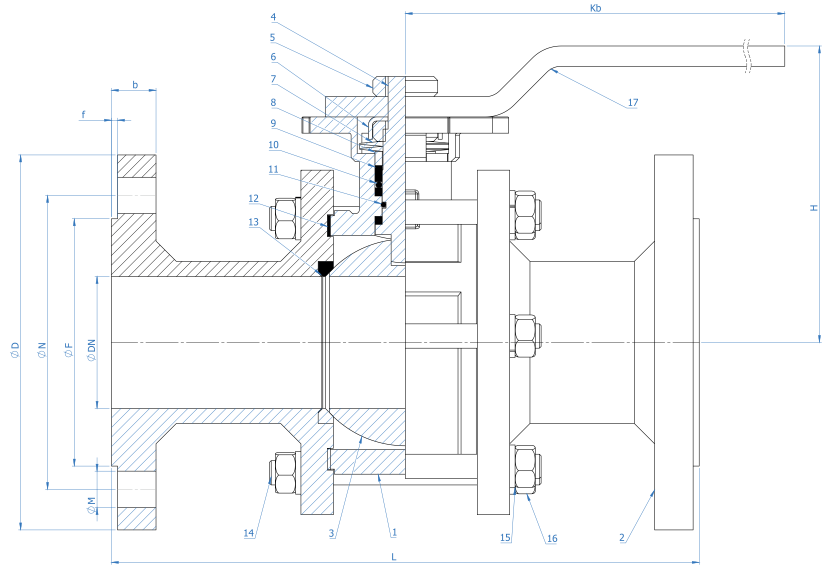
CE0408, TS EN 10204 3.1, ATEX, ADR, Fire Safe, ISO 9001:2015, SIL3

Application

Hot water, cold water, compressed air, fuel oil, ceramic etc.



NO	PART NAME	MATERIAL
1	BODY	CARBON STEEL
2	COVER	CARBON STEEL
3	STEM	AISI 430
4	BALL SHAFT	AISI 430
5	LOCKINGNUT	A2 STAINLESS
6	LOCKING SHEET METAL	STEEL
7	BAWL WASHER	COVERING
8	COMPRESSION RING	STAINLESS
9	STEM SEALING ELEMENT	PTFE
10	METAL RING	STAINLESS
11	O-RING	VITON
12	COVER GASKET	PTFE
13	BALL GASKET	PTFE
14	STUD	STEEL
15	SPRING WASHER	STEEL
16	NUT	STEEL
17	LEVER	STEEL



DN	DIMENSIONS				CONNECTION SIZES PN16						CONNECTION SIZES PN40						ACTUATOR CONNECTION		
	L	Kb	H	f	D	b	N	M	F	MN	D	b	N	M	F	MN	F	□	Kg
15	130	160	80	2	95	16	65	14	45	4	95	16	65	14	45	4	F03 - F04	9	2.6
20	150	160	80	2	105	18	75	14	58	4	105	18	75	14	58	4	F03 - F04	9	3.3
25	160	180	90	2	115	18	85	14	68	4	115	18	85	14	68	4	F04 - F05	11	4.7
32	180	180	100	2	140	18	100	18	78	4	140	18	100	18	78	4	F04 - F05	11	7
40	200	290	110	3	150	18	110	18	88	4	150	18	110	18	88	4	F05 - F07	14	8.9
50	230	290	120	3	165	18	125	18	102	4	165	20	125	18	102	4	F05 - F07	14	12.7
65	290	400	150	3	185	18	145	18	122	4	185	22	145	18	122	8	F07 - F10	17	20.8
80	310	410	160	3	200	20	160	18	138	8	200	24	160	18	138	8	F10 - F12	22	28.8
100	350	410	175	3	220	20	180	18	158	8	235	24	190	22	162	8	F10 - F12	22	40.8
125	400	454	225	3	250	22	210	18	188	8	270	26	220	26	188	8	F10	22	60
150	350	454	245	3	285	22	240	22	212	8	300	28	250	26	218	8	F12	22	81
200	400	497	287	3	340	24	295	22	268	12	375	34	320	30	285	12	F12	27	140