

3 PIECES BALL VALVE

Stainless Steel, Flanged

PN16 PN40
 AISI 304 V-M3P-04-04F V-M3P-04-07F
 AISI 316 V-M3P-05-04F V-M3P-05-07F

Design

Size : DN15 - DN125 EN558-1/ F1
 DN150 - DN200 EN558-1/ F5
 Connection : EN 1092-1
 Actuator Connection: ISO 5211

Technical Features

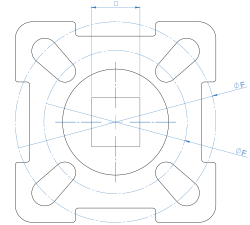
Working Pressure : PN16, PN40
 Working Temperature : -30°C / +180°C
 Usage : Option with actuator connection and handle

Certificate

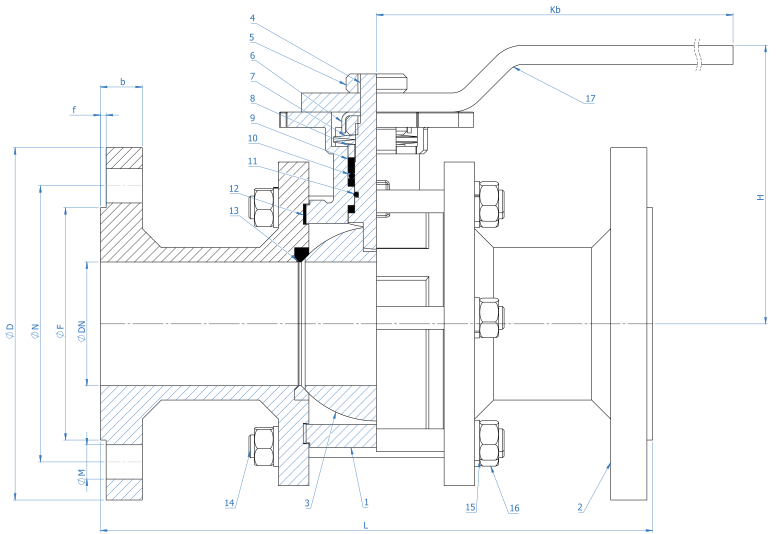
CE0408, TS EN 10204 3.1, ATEX, ADR, Fire Safe, ISO 9001:2015, SIL3

Application

Corrosive fluids (acids, bases), pharmaceutical raw materials, food, chemical industry, plastic etc.



NO	PART NAME	MALZEME	
1	BODY	AISI 304	AISI 316
2	COVER	AISI 304	AISI 316
3	STEM	AISI 304	AISI 316
4	BALL SHAFT	AISI 304	AISI 316
5	LOCKINGNUT	A2 STAINLESS	A2 STAINLESS
6	LOCKING SHEET METAL	STAINLESS	STAINLESS
7	BAWL WASHER	COATING	COATING
8	COMPRESSION RING	STAINLESS	STAINLESS
9	STEM SEALING ELEMENT	PTFE	PTFE
10	METAL RING	STAINLESS	STAINLESS
11	O-RING	VITON	VITON
12	COVER GASKET	PTFE	PTFE
13	BALL GASKET	PTFE	PTFE
14	STUD	STAINLESS	STAINLESS
15	SPRING WASHER	STAINLESS	STAINLESS
16	NUT	A2 STAINLESS	A2 STAINLESS
17	LEVER	AISI 304	AISI 304



SIZE	DIMENSIONS				CONNECTION SIZES PN16							CONNECTION SIZES PN40						ACTUATOR CONNECTION		
	L	Kb	H	f	D	b	N	M	F	MN	D	b	N	M	F	MN	F	□	Kg	
DN15	130	160	80	2	95	16	65	14	45	4	95	16	65	14	45	4	F03 - F04	9	2.6	
DN20	150	160	80	2	105	18	75	14	58	4	105	18	75	14	58	4	F03 - F04	9	3.3	
DN25	160	180	90	2	115	18	85	14	68	4	115	18	85	14	68	4	F04 - F05	11	4.7	
DN32	180	180	100	2	140	18	100	18	78	4	140	18	100	18	78	4	F04 - F05	11	7	
DN40	200	290	110	3	150	18	110	18	88	4	150	18	110	18	88	4	F05 - F07	14	8.9	
DN50	230	290	120	3	165	18	125	18	102	4	165	20	125	18	102	4	F05 - F07	14	12.7	
DN65	290	400	150	3	185	18	145	18	122	4	185	22	145	18	122	8	F07 - F10	17	20.8	
DN80	310	410	160	3	200	20	160	18	138	8	200	24	160	18	138	8	F10 - F12	22	28.8	
DN100	350	410	175	3	220	20	180	18	158	8	235	24	190	22	162	8	F10 - F12	22	40.8	
DN125	400	454	225	3	250	22	210	18	188	8	270	26	220	26	188	8	F10	22	60	
DN150	350	454	245	3	285	22	240	22	212	8	300	28	250	26	218	8	F12	22	81	
DN200	400	497	287	3	340	24	295	22	268	12	375	34	320	30	285	12	F12	27	140	