

## 3 PIECES HIGH TEMPERATURE BALL VALVE Carbon Steel, Flanged

Carbon Steel PN16 V-M3P-03-04F PN40 V-M3P-03-07F

### Design

Size : DN15 - DN125 EN558-1 / F1  
DN150 - DN200 EN558-1 / F5  
Connection : EN 1092-1  
Actuator Connection: ISO 5211

### Technical Features

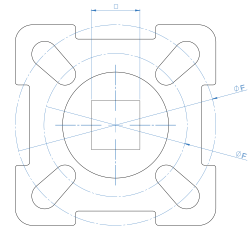
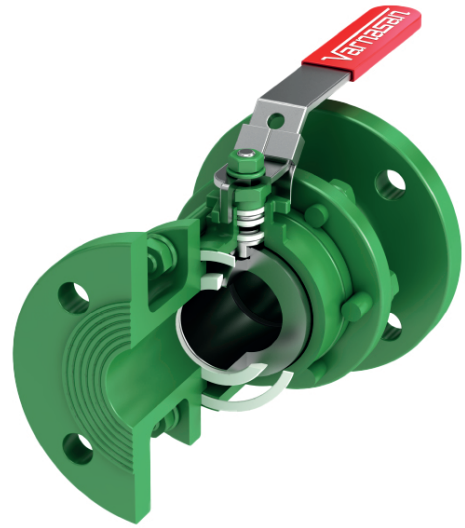
Working Pressure : PN16, PN40  
Working Temperature : -40°C / +250°C  
Usage : Option with actuator connection and handle

### Certificate

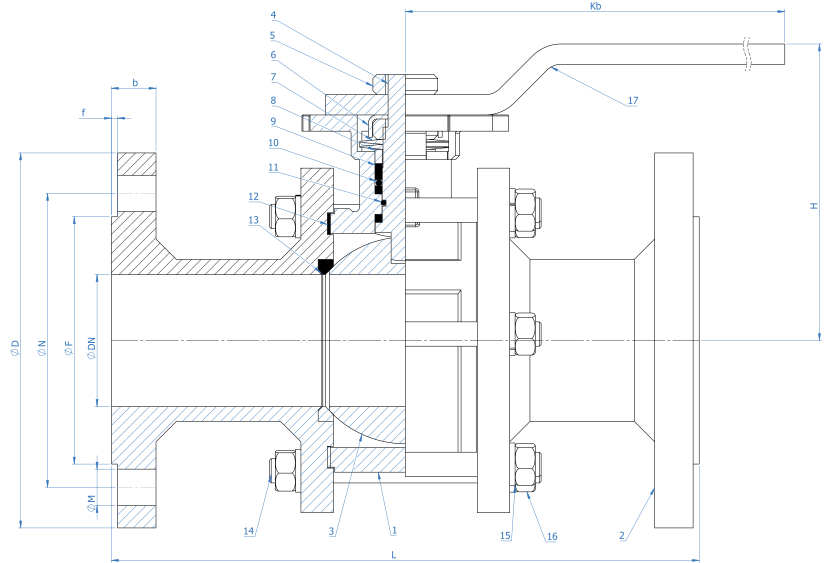
CE0408, TS EN 10204 3.1, ATEX, ADR, Fire Safe, ISO 9001:2015, SIL3

### Application

Hot water, cold water, compressed air, fuel oil, ceramic etc.



NO	PART NAME	MATERIAL
1	BODY	CARBON STEEL
2	COVER	CARBON STEEL
3	STEM	AISI 430
4	BALL SHAFT	AISI 430
5	LOCKINGNUT	A2 STAINLESS
6	LOCKING SHEET METAL	STEEL
7	BAWL WASHER	COVERING
8	COMPRESSION RING	STAINLESS
9	STEM SEALING ELEMENT	%35 C PTFE
10	METAL RING	STAINLESS
11	O-RING	FFKM
12	COVER GASKET	%35 C PTFE
13	BALL GASKET	%35 C PTFE
14	STUD	STEEL
15	SPRING WASHER	STEEL
16	NUT	STEEL
17	LEVER	STEEL



DIMENSION					CONNECTION SIZES PN16						CONNECTION SIZES PN40						ACTUATOR CONNECTION			
DN	L	Kb	H	f	D	b	N	M	F	MN	D	b	N	M	F	MN	F	□	Kg	
15	130	160	80	2	95	16	65	14	45	4	95	16	65	14	45	4	F03 - F04	9	2.6	
20	150	160	80	2	105	18	75	14	58	4	105	18	75	14	58	4	F03 - F04	9	3.3	
25	160	180	90	2	115	18	85	14	68	4	115	18	85	14	68	4	F04 - F05	11	4.7	
32	180	180	100	2	140	18	100	18	78	4	140	18	100	18	78	4	F04 - F05	11	7	
40	200	290	110	3	150	18	110	18	88	4	150	18	110	18	88	4	F05 - F07	14	8.9	
50	230	290	120	3	165	18	125	18	102	4	165	20	125	18	102	4	F05 - F07	14	12.7	
65	290	400	150	3	185	18	145	18	122	4	185	22	145	18	122	8	F07 - F10	17	20.8	
80	310	410	160	3	200	20	160	18	138	8	200	24	160	18	138	8	F10 - F12	22	28.8	
100	350	410	175	3	220	20	180	18	158	8	235	24	190	22	162	8	F10 - F12	22	40.8	