

3 WAY T TYPE BALL VALVE Carbon Steel, Flanged

Carbon Steel PN16 PN40
 V-M3P-03-04A V-M3P-03-07A
 V-MT2-03-04F V-MT2-03-07F

Design

Size : VARNASAN
 Connection : EN 1092-1
 Actuator Connection: ISO 5211

Technical Features

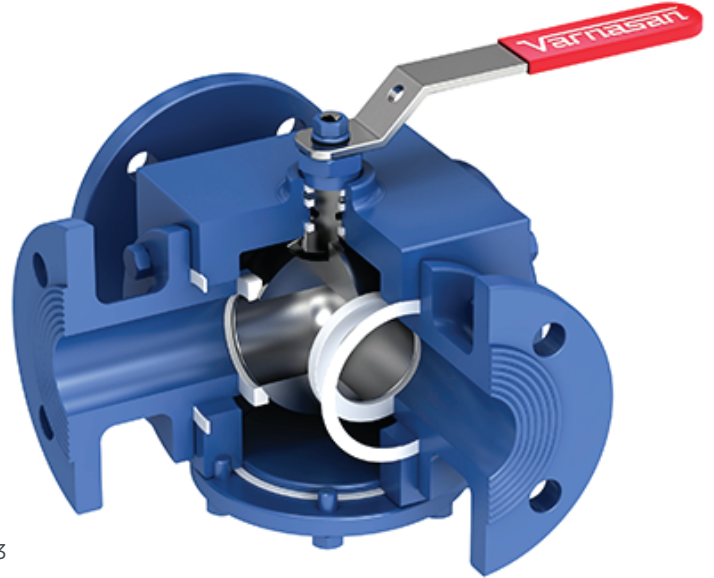
Working Pressure : PN16, PN40
 Working Temperature : -30°C / +180°C
 Usage : Option with actuator connection and handle

Certificate

CE0408, TS EN 10204 3.1, ATEX, ADR, Fire Safe, ISO 9001:2015, SIL3

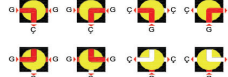
Application

Hot water, cold water lines, compressed air, fuel oil, ceramic mud etc.

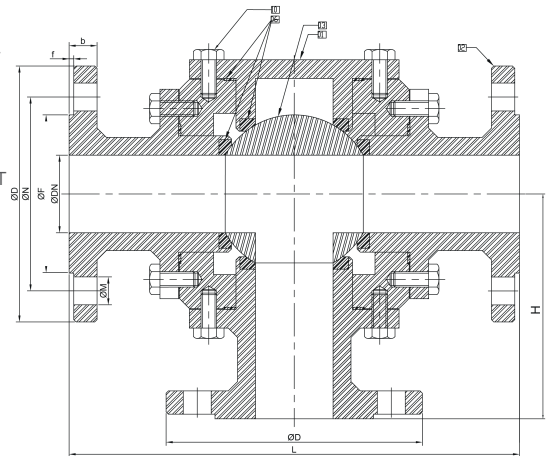
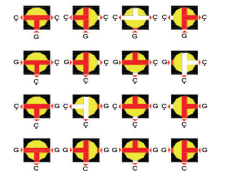


NO	PART NAME	CARBON STEEL VALVE
1	BODY	CARBON STEEL
2	COVER	CARBON STEEL
3	STEM	AISI 430
4	BALL SHAFT	AISI 430
5	LOCKINGNUT	A2 STAINLESS
6	BOWL WASHER	COATING
7	COMPRESSION RING	STAINLESS
8	STEM SEALING ELEMENT	PTFE
9	METAL RING	STAINLESS
10	O-RING	VITON
11	COVER GASKET	PTFE
12	LEVER	STEEL
13	STUD	STEEL

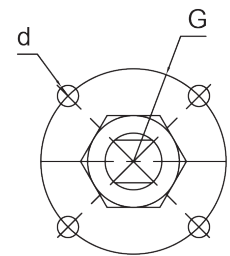
SERIE 1/BALL MOVEMENT



SERIE 2/BALL MOVEMENT



TYPE	SIZE	DIMENSIONS					CONNECTION SIZES PN16					CONNECTION SIZES PN40					ACTUATOR CONNECTION			
		DN	L	Kb	H	f	D	b	N	M	F	MN	D	b	N	M	F	MN	G	d
3 WAY-FL	DN 15	160	160	80	2	95	14	65	14	60	4	95	16	65	14	67	4	36	M5	2,8
	DN 20	180	160	90	2	105	16	75	14	70	4	105	18	75	14	83	4	36	M5	3,8
	DN 25	210	180	105	2	115	16	85	14	80	4	115	18	85	14	89	4	42	M5	5
	DN 32	230	215	115	2	140	16	100	18	89	4	140	18	100	18	98	4	42	M5	7
	DN 40	230	215	115	2	150	16	110	18	98	4	150	18	110	18	114	4	50	M6	9,5
	DN 50	290	295	145	3	165	18	125	18	121	4	165	20	125	18	127	4	50	M6	13
	DN 65	310	295	155	3	185	18	145	18	140	4	185	22	145	18	149	8	70	M8	20
	DN 80	350	400	175	3	200	20	160	18	152	8	200	24	160	18	168	8	70	M8	26,5
	DN 100	400	400	200	3	220	20	180	18	191	8	235	24	190	22	200	8	102	M10	42



ACTUATOR CONNECTION